

2025



INDUSTRIAL PC

MONITOR

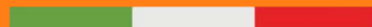
BOX PC

CUSTOM PC

www.panel.it



MADE IN ITALY





Catalog Index 2025

1	THE COMPANY	12-13	INOX PC
2-3	CUSTOM SOLUTIONS	14-15	BOX PC
4-7	PANEL PC	16-17	MONITOR
8-9	ARM PC	18-19	REMOTED MONITOR
10-11	VESA PC	20	SUPPORT AND ASSISTANCE

The Company

Panel was founded in 1997 as an industrial automation company, capturing a specific market need: **the need for specialization in human-machine interface**. Over the next twenty years, Panel has gradually consolidated itself as a point of reference in the **Human-Machine Interface** sector at an **international level**.

Web site
www.panel.it

Contacts
+39 0536 808519
info@panel.it



Our values



Reliability

With thousands of installations in diverse industrial sectors, Panel's reliability is confirmed by the trust of our customers, which are some of the most famous brands in the world. A solid partner, always ready to support you with quality and professionalism.



Continuity

Panel can guarantee continuity of supply over time. A Panel product is an investment protected by an assistance and maintenance service that makes it last a long time. Industrial PCs designed to guarantee uninterrupted operations, even in the most demanding contexts.



Flexibility

In Panel we offer customized solutions for the specific needs of each industrial project, even the most challenging. Flexibility also means the ability to listen to the customer, promptness in assembly on request and rapid delivery anywhere in Italy and Europe.



Innovation

At the heart of our commitment: designing industrial PCs that anticipate the challenges of the future, ensuring excellent performance and total adaptability. Choosing our PCs means investing in quality and technology that evolves with your business.



Our expertise

We offer **cutting-edge technology solutions**, designed to withstand the most extreme industrial conditions. Our experience and commitment to reliability and customization guarantee your business a **superior performance and continuous support**.

- ✓ Customized solutions
- ✓ Stability and quality
- ✓ Dedicated consultants
- ✓ High performances

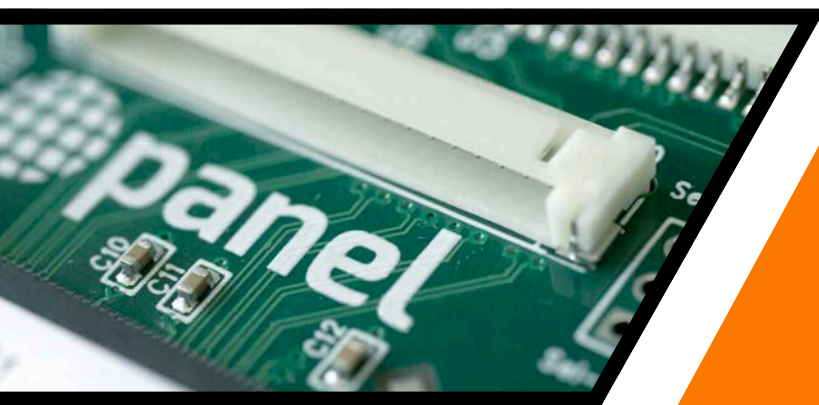
Custom solutions

Made for your needs

The experience gained over the years of activity, the wide range of products, and an extremely qualified technical/commercial team, make Panel products the ideal solution for various applications.

We offer our customers solutions based on specific requests and for any work environment.

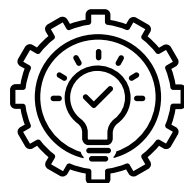
Our customizations offer the possibility of creating industrial PCs and box PCs perfectly adapted to the unique needs of your sector.



From mechanical design to component selection, our team offers qualified and rapid services.

Thanks to our experience, we can create solutions that integrate perfectly into your operating environment, to optimize processes and to support the growth of your business.

Imagine your ideal solution...



...and we'll build it for you!

Custom front panels

User-friendly graphics

The wide range of products, the flexibility of configuration, and the very high reliability, make Panel products the ideal solution for various applications, industrial and non-industrial, even in particularly harsh environments.

Panel also innovates in style. Thanks to an exclusive technology, customers can customize the front panel of their PCs and monitors with graphics, logos, colors and symbols making them unique and identifying their company. A service created internally, guaranteed in short times and also available for orders of a few units.

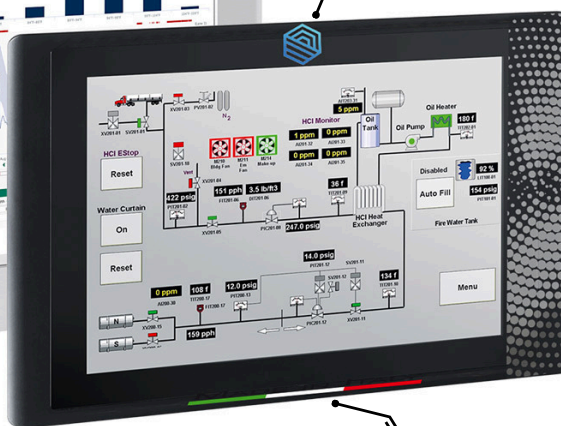


Logo



Custom graphics

Logo



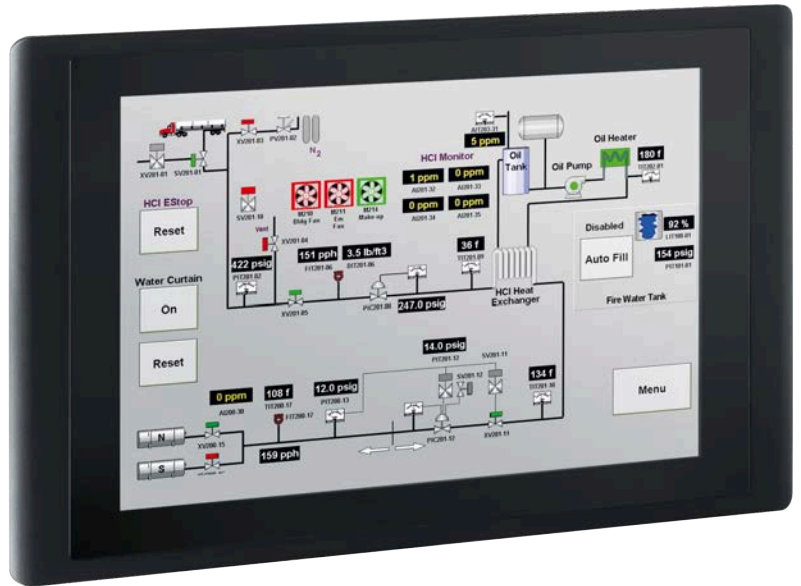
Symbols, QR codes and much more

Custom graphics



Capacitive Touch Screen

- 10.1" to 21.5" Display
- Capacitive touch screen
- CPU up to Intel Core i7
- Internal power supply 24VDC or 110-230 VAC
- IP66 protection grade
- Operating temperature of 0-50°C ; 0-45°C
- Customizable panel
- CE, cURus certification



FANLESS **Industrial PCs for panel mounting** in compact version and equipped with displays from 10.1" to 21.5", both in compact and Widescreen form. Also Full HD resolution.

Ideal for industrial environments, even particularly extreme ones. Thanks to the flexibility of configuration, the **PSG** series can be supplied with a wide range of CPUs, making them the ideal solution for industrial automation applications and beyond.

All configurations can include internal 24 VDC or 110-230 VAC power supply. The front panel, with **IP66** protection rating, is made of **black silk-screened tempered glass with an aluminum edge** and a **multi-touch rear-projected capacitive touch screen**.



PSG2 Series

PRODUCT ID	EM-FT	EN	FD	
DISPLAY	10.1" 1280x800(FT) Wide 12.1" 800x600 1024x768 15" 1024x768 15.6" 1366x768 Wide 1920x1080 Wide 17" 1280x1024 18.5" 1366x768 Wide 1920x1080 Wide 21,5" 1920x1080 Wide	12.1" 800x600 1024x768 15" 1024x768 15.6" 1366x768 Wide 1920x1080 Wide 17" 1280x1024 18.5" 1366x768 Wide 1920x1080 Wide 21,5" 1920x1080 Wide		
TOUCH TYPE	Projected capacitive multi touch			
CPU	Intel Celeron N3350(EM) Intel Pentium N4200(FT)	Intel Core i3-7100T Intel Core i5-7500T Intel Core i7-7700T	Intel N97	
OS SUPPORTS	Windows 10 64 bit Linux		Windows 10 64 bit Windows 11 64 bit Linux	
STORAGE	1x M.2 SSD 1x 2.5" SSD	1x 2.5" SSD	1x 2.5" SSD 1x M.2 SSD	
EXPANSION SLOTS	1x Full Mini PCIe 1x M.2 *	1x Full Size Mini PCIe/mSATA 1x Half Size Mini PCIe	2x M2	
SERIAL PORTS	Up to 3x RS232/422/485 1x RS232	2x RS232/422/485 2x RS232	1x RS232/422/485 Up to 3x RS232	
USB PORTS	Up to 4x USB 3.0 Up to 2x USB 2.0	4x USB 3.0 1x USB 2.0	3x USB 3.2 1x USB 2.0	
AUDIO I/O	1x Line-out 1x Mic-in *		N/A	
VIDEO OUTPUT	1x VGA 1x HDMI	3x HDMI	1x HDMI 1x DP	
LAN PORTS	2x RJ45 10/100/1000 Gigabit LAN			
POWER SYSTEM	24 VDC 110-230 VAC **			
OPERATING TEMPERATURE	0-50°C ; 0-45°C with Intel Core i7			
FRONTAL PANEL PROTECTION	IP66			
SAFETY	CE ; cURus (EM/EN)			

* Only for EM

** Only for EM/EN/FD



Resistive Touch Screen

- 8" to 21.5" Display
- Resistive touch screen
- CPU up to Intel Core i7
- Internal power supply 24VDC or 110-230 VAC
- IP66 protection grade
- Operating temperature of 0-50°C ; 0-45°C
- Customizable panel
- CE, cURus certification



FANLESS industrial PCs for panel mounting in compact version and equipped with displays from 8" to 21.5", both in 4:3 and 16:9 versions, and Full HD resolution.

Ideal for industrial environments, even particularly extreme ones. Thanks to the flexibility of configuration, the **PSR** series can be supplied with a wide range of CPUs, making them the ideal solution for industrial automation applications and beyond.

All configurations can include internal 24 VDC or 110-230 VAC power supply. The front panel, with **IP66** protection rating, is made of **anodized aluminum**, with USB port and **5-wire resistive touch screen**.



PSRI Series

PRODUCT ID	EM-FT	EN	FD	
DISPLAY	8" 800x600(FT) 10.1" 1024x600(FT) Wide 10.4" 800x600 12.1" 800x600 1024x768 15" 1024x768 15.6" 1366x768 Wide 1920x1080 Wide 17" 1280x1024 18.5" 1366x768 Wide 1920x1080 Wide 21.5" 1920x1080 Wide	12.1" 800x600 1024x768 15" 1024x768 15.6" 1366x768 Wide 1920x1080 Wide 17" 1280x1024 18.5" 1366x768 Wide 1920x1080 Wide 21.5" 1920x1080 Wide		
TOUCH TYPE	5 Wire resistive touch			
CPU	Intel Celeron N3350(EM) Intel Pentium N4200(FT)	Intel Core i3-7100T Intel Core i5-7500T Intel Core i7-7700T	Intel N97	
OS SUPPORTS	Windows 10 64 bit Linux		Windows 10 64 bit Windows 11 64 bit Linux	
STORAGE	1x M.2 SSD 1x 2.5" SSD *	1x 2.5" SSD	1x 2.5" SSD 1x M.2 SSD	
EXPANSION SLOTS	1x Full Mini PCIe 1x M.2 *	1x Full Size Mini PCIe/mSATA 1x Half Size Mini PCIe	1x Full Mini PCIe 2x M2	
SERIAL PORTS	Up to 3x RS323/422/485 1x RS232	2x RS323/422/485 2x RS232	1x RS232/422/485 Up to 3x RS232	
USB PORTS	Up to 4x USB 3.0 Up to 2x USB 2.0	4x USB 3.0 1x USB 2.0	3x USB 3.2 1x USB 2.0	
AUDIO I/O	1x Line-out 1x Mic-in *		N/A	
VIDEO OUTPUT	1x VGA 1x HDMI	3x HDMI	1x HDMI 1x DP	
LAN PORTS	2x RJ45 10/100/1000 Gigabit LAN			
POWER SYSTEM	24 VDC 110-230 VAC **			
OPERATING TEMPERATURE	0-50°C ; 0-45°C with Intel Core i7			
FRONTAL PANEL PROTECTION	IP66			
SAFETY	CE ; cURus (EM/EN)			

* Only for EM

** Only for EM/EN/FD



Capacitive Touch Screen

- 15.6" to 21.5" Display
- Capacitive touch screen
- CPU up to Intel Core i7
- Internal power supply 24VDC or 110-230 VAC
- Full IP65 protection rating
- Operating temperature of 0-50°C
- Customizable panel
- Made entirely from aluminium CNC machined
- 3 Mounting types: VESA, suspension, floor stand



PAC116

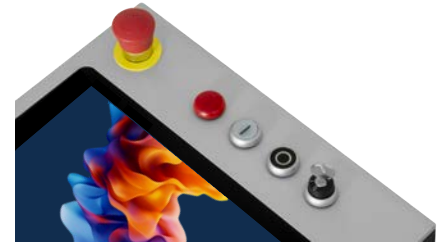
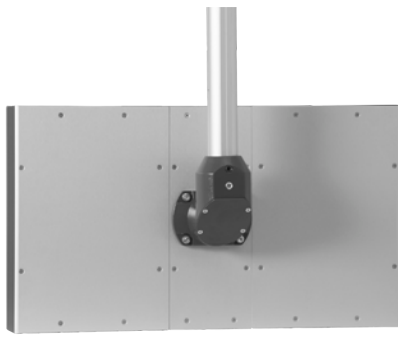


PAC122

TOTAL PROTECTION - **FANLESS** industrial PCs and monitors, extremely compact. **IP65** on the entire machine body and therefore suitable even for the most demanding industrial environments.

HIGH PERFORMANCE - Performance is guaranteed by the **latest generation CPUs** capable of satisfying even the most demanding requests. PCs and monitors are equipped with a LED backlit display, with a multitouch rear-projected capacitive touch screen.

THREE DIFFERENT MOUNTINGS - The provision for 3 different types of mounting makes the PAC extremely versatile and flexible. The PC is available for **suspension arm, floor stand** or **VESA mounting**.



**Suspended Monitor
version**
PAM Series



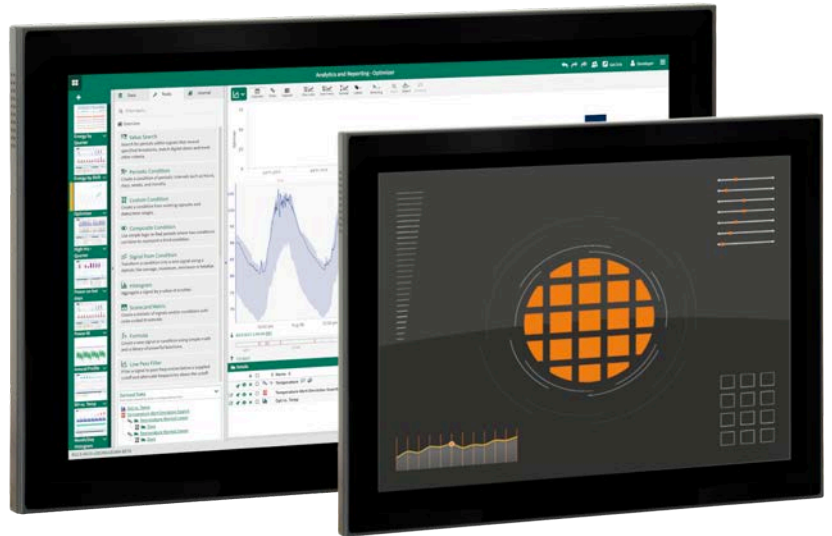
Serie PAC

PRODUCT ID	EM	EN
DISPLAY	15.6" 1366x768 Wide 1920x1080 Wide 21.5" 1920x1080 Wide	
TOUCH TYPE	Projected capacitive multi touch	
CPU	Intel Celeron N3350 Intel Pentium N4200	Intel Core i3-7100T Intel Core i5-7500T Intel Core i7-7700T
OS SUPPORTS	Windows 10 64 bit Linux	
STORAGE	1x M.2 SSD 1x 2.5" SSD	Up to 2x 2.5" SSD
EXPANSION SLOTS	1x Full Mini PCIe 1x M.2	1x Full Size Mini PCIe/mSATA 1x Half Size Mini PCIe
SERIAL PORTS	3x RS232/422/485 up to 1x RS232	2x RS232/422/485 up to 2x RS232
USB PORTS	4x USB 3.0	4x USB 3.0 1x USB 2.0
AUDIO I/O	1x Line-out 1x Mic-in	
VIDEO OUTPUT	1x VGA 1x HDMI	3x HDMI
LAN PORTS	2x RJ45 10/100/1000 Gigabit LAN	
POWER SYSTEM	24 VDC	
OPERATING TEMPERATURE	0-50°C	
KEYS	Up to 10 Ø 22 elements	
PROTECTION GRADE	Full IP65	
SAFETY	CE	



Capacitive Touch Screen

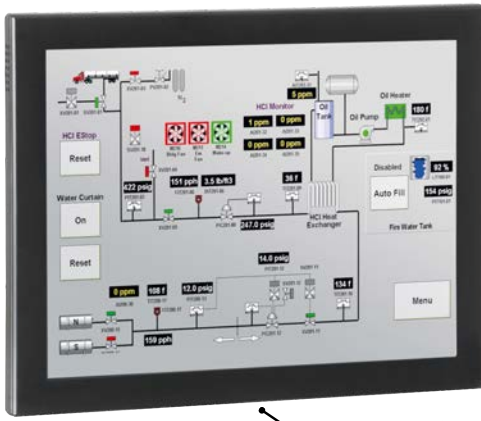
- 15" to 21.5" Display
- Capacitive or resistive touch screen
- CPU up to Intel Core i7
- Internal power supply 24VDC or 110-230 VAC
- Degree of protection IP30*
*IP 66 su pannello frontale
- Operating temperature of 0-50°C
- Customizable panel
- VESA Mounting



Industrial PCs for VESA mounting, available with multi-touch or resistive rear-projected capacitive touch screen.

Versatile and practical, these PCs can be easily integrated into existing systems thanks to VESA support. Extremely compact and completely **FANLESS**, they are also available in Widescreen form. Resolutions also Full HD.

The VESA series PCs are equipped with the latest generation CPUs, capable of providing high performance which, combined with very low consumption, are the ideal solution for industrial automation applications and beyond.



PVR Series

Resistive



PVG Series

Capacitive



PVR Series

PVG Series

PRODUCT ID	EM	EM	EN
DISPLAY	15" 1024x768	17" 1280x1024 18.5" 1366x768 Wide Wide Wide 1920x1080 Wide 21.5" 1920x1080 Wide	18.5" 1366x768 Wide Wide 1920x1080 Wide 21.5" 1920x1080 Wide
TOUCH TYPE	5 Wire resistive touch	Projected capacitive multi touch	
CPU	Intel Celeron N3350 Intel Pentium N4200	Intel Core i3-7100T Intel Core i5-7500T Intel Core i7-7700T	
OS SUPPORTS	Windows 10 64 bit Linux		
STORAGE	1x M.2 SSD 1x 2.5" SSD	Up to 2x 2.5" SSD	
EXPANSION SLOTS	1x Full Mini PCIe 1x M.2 *	1x Full Size Mini PCIe/mSATA 1x Half Size Mini PCIe	
SERIAL PORTS	3x RS232/422/485	2x RS232/422/485	
USB PORTS	4x USB 3.0 Up to 2x USB 2.0	4x USB 3.0	
AUDIO I/O	1x Line-out 1x Mic-in		
VIDEO OUTPUT	1x VGA 1x HDMI	3x HDMI	
LAN PORTS	2x RJ45 10/100/1000 Gigabit LAN		
POWER SYSTEM	24 VDC 110-230 VAC		
OPERATING TEMPERATURE	0-50°C		
PROTECTION GRADE	IP30 **		
SAFETY	CE		

* Only for EM

** IP66 on front panel



Capacitive - Resistive Touch Screen

- 15" to 18.5" Display
- Capacitive or resistive touch screen
- Intel N97 CPU
- Internal power supply 24VDC or 110-230 VAC
- Full IP67 protection grade
- Operating temperature of 0-50°C
- Customizable panel
- Entirely in AISI 304 stainless steel



CE ✓RoHS Windows Embedded Linux



Fully FANLESS industrial PCs, made of **AISI 304 stainless steel** with **total IP67 protection**, for **VESA** mounting.

Extremely compact, they are equipped with **LED displays** and are available with either a **multitouch rear-projected capacitive touch screen** or a **resistive touch screen**.

Thanks to the multiple configurations available and latest-generation CPUs, capable of providing high performance combined with very low consumption, they are the **ideal solution for food, pharmaceutical and chemical applications**.



PVS Series

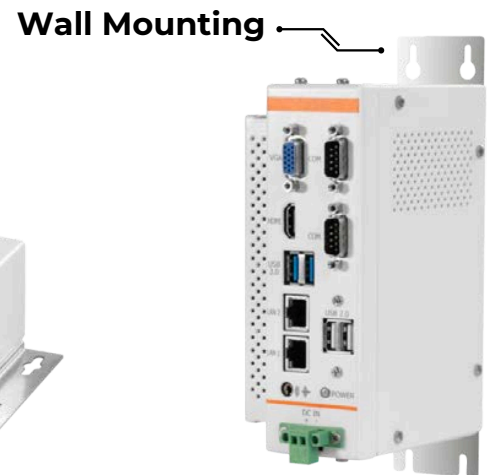
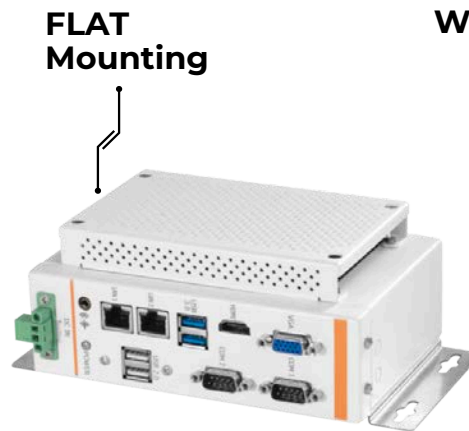
PRODUCT ID	FD
DISPLAY	15" 1024x768
	15.6" 1366x768 Wide
	1920x1080 Wide
	17" 1280x1024
TOUCH TYPE	18.5" 1366x768 Wide
	1920x1080 Wide
CPU	5 Wire resistive touch Projected capacitive multi touch
OS SUPPORTS	Intel N97
STORAGE	Windows 10 Windows 11 Linux
SERIAL PORTS	1x 2.5" SSD
USB PORTS	Up to 2x COM Ports
LAN PORTS	Up to 2x USB 2.0
POWER SYSTEM	Up to 2x RJ45 10/100/1000 Gigabit LAN
OPERATING TEMPERATURE	24 VDC 110-230 VAC
MATERIAL	0-50°C
PROTECTION GRADE	AISI 304 Stainless steel
SAFETY	Full IP67
	CE



- Latest generation CPU
- Extra compact design
- Internal power supply 24VDC or 110-230 VAC
- Operating temperature 0-50°C
- For DIN rail, inside panel or table mounting



CE ✓RoHS Windows Embedded Linux



Industrial **BOX PCs** for DIN rail mounting, inside a panel or table. Thanks to their design and extremely flexible configuration, solutions can be obtained for multiple types of use with **CPUs with high computing power**, completely **FANLESS**.

Panel's industrial BOX PCs are **robust and compact solutions** designed to guarantee high performance and offer efficient management of automated processes thanks to their versatility in integrating with complex machinery and systems.

With advanced computing power and support for multiple interfaces, these devices ensure **continuous and uninterrupted operation**, optimizing productivity. Combined with monitors, they are **ideal for applications in sectors such as manufacturing, logistics and automation**, BOX PCs are **easy to customize to meet specific needs**, improving efficiency and time.



PAB123

PAB124

PAB223

PAB224

PAB323

PRODUCT ID					
CPU	Intel Pentium N4200		Intel Celeron J6412		Intel Core i5-1135G7B
OS SUPPORTS	Windows 10 64 bit Linux		Windows 10 64 bit Windows 11 64 bit Linux		
STORAGE	1x M.2 SSD 1x 2,5" SSD (optional)				1x M.2 SSD 1x 2,5" SSD (optional) RAID 0/1 option available
EXPANSION SLOTS	1x Mini PCIe half size				1x Mini PCIe full size
SERIAL PORTS	1x RS232/422/485 1x RS232	N/A	2x RS232/422/485	N/A	2x RS232/422/485
USB PORTS	2x USB 2.0 2x USB 3.0		4x USB 3.2 2x USB 2.0		
AUDIO I/O	Line-Out				
VIDEO OUTPUT	1x VGA 1x HDMI		2x HDMI		
LAN PORTS	2x RJ45 Gigabit LAN	4x RJ45 Gigabit LAN	2x RJ45 Gigabit LAN	4x RJ45 Gigabit LAN	2x RJ45 Gigabit LAN 2x RJ45 Gigabit LAN (Optional)
POWER SYSTEM	24 VDC				
OPERATING TEMPERATURE	0-50°C				
SAFETY	CE				



Capacitive - Resistive Touch Screen

- 12.1" to 21.5" Display
- Wide screen or 4:3 format
- Capacitive or resistive touch screen
- Internal power supply 24VDC or 110-230 VAC
- IP66 protection grade
- Operating temperature 0-50°C
- Customizable panel
- VESA or Panel Mounting



Capacitive
PMG Series



Resistive
PMR Series

Industrial panel mounting monitors with 12.1" to 21.5" wide screen displays with LED backlight and **excellent resolution**. Available with both 24VDC and 230VAC power supply and featuring **high brightness**, a **wide viewing** angle and the possibility of connection via **VGA or DVI port**.

The PMG and PMR series are the ideal solution for supervision and control in even critical industrial environments.

The **PMG** front panel, with IP66 protection rating, is made of black silk-screened tempered glass with an aluminium edge and a multi-touch rear-projected capacitive touch screen.

The **PMR** front panel, in anodized aluminum and with IP66 protection rating, is equipped with a 5-wire resistive touch screen.



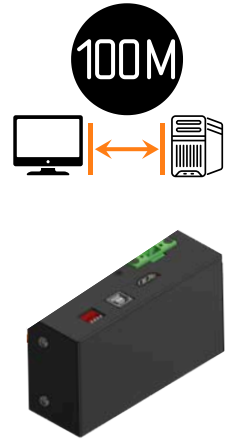
PMG3 Series

PMR2 Series

PRODUCT ID	
DISPLAY	12.1" 800x600 1024x768
	15" 1024x768
	15.6" 1366x768 Wide 1920x1080 Wide
	17" 1280x1024
	18.5" 1366x768 Wide 1920x1080 Wide
	21,5" 1920x1080 Wide
TOUCH TYPE	Projected capacitive multi touch
FRONT USB PORTS	N/A
POWER SYSTEM	24 VDC 110-230 VAC
VIDEO INPUT	1x VGA 1x DVI
OPERATING TEMPERATURE	0-50°C
FRONTAL PANEL PROTECTION	IP66
SAFETY	CE



- Network connection up to 100 meters
- 12.1" to 21.5" Display
- Capacitive or resistive touch screen
- Internal power supply 24VDC
- IP66 protection grade
- Operating temperature 0-50°C
- Customizable panel
- 24VDC external transmitter for DIN mounting

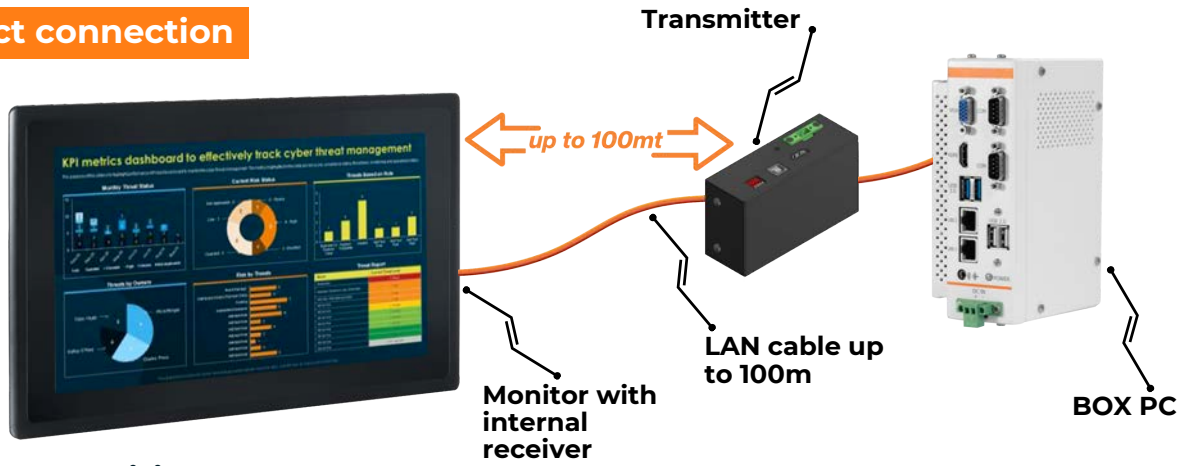


Industrial monitor for panel mounting with **remote control system via LAN network** with coverage up to **100 meters**, LED backlit with excellent resolution. Ideal solution for supervision and control, even in machines or systems where there are many disturbances or where it is necessary to cover very long distances between PC and monitor. Possibility of connection also through the company network.

The **PRG** front panel, with **IP66** protection rating, is made of black silk-screened tempered glass with an aluminium edge and a multi-touch rear-projected capacitive touch screen.

The **PRR** front panel, in anodized aluminum and with **IP66** protection rating, is equipped with a 5-wire resistive touch screen.

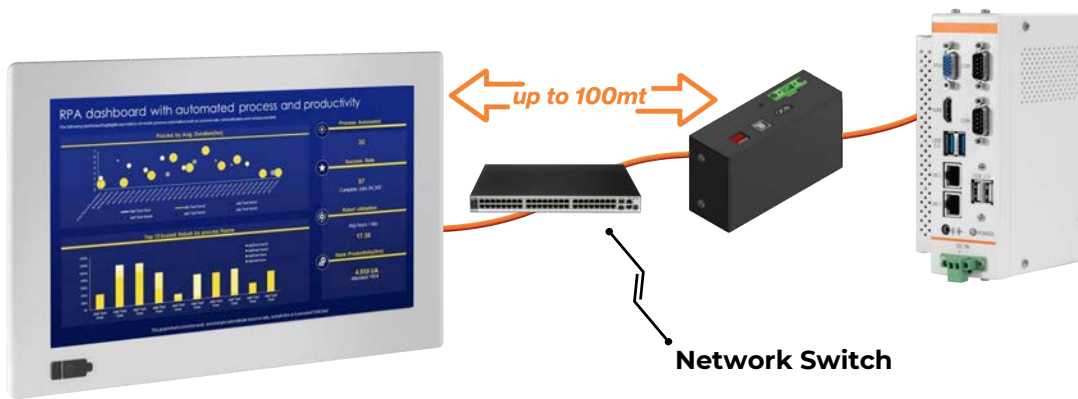
Direct connection



Capacitive

PRG Series

Connection through the company network



Resistive

PRR Series

PRG3 Series

PRR2 Series

PRODUCT ID	
DISPLAY	12.1" 800x600 1024x768
	15" 1024x768
	15.6" 1366x768 Wide 1920x1080 Wide
	17" 1280x1024
	18.5" 1366x768 Wide 1920x1080 Wide
	21.5" 1920x1080 Wide
TOUCH TYPE	Projected capacitive multi touch
FRONT USB PORTS	N/A
POWER SYSTEM	24 VDC
REAR INPUT	1x USB 2.0
VIDEO INPUT	1x LAN
OPERATING TEMPERATURE	0-50°C
FRONTAL PANEL PROTECTION	IP66
SAFETY	CE



Support and assistance

Our team of experts is always ready to guide you in choosing the solution that best suits your needs, ensuring timely and **personalized assistance at every stage of the process.**

- ✓ The **sales consultancy** is always available to offer you a personalized experience, guiding you in choosing the ideal solution for your industrial needs.
- ✓ The **after-sales technical assistance service** is able to support with professionalism and speed the issues regarding the entire range of Panel products.

With our consultants and dedicated maintenance, you can be sure that your systems will always be perfect for your situation, operational and optimized at their best. We are at your side, before and after the purchase, to guarantee you a worry-free experience.



Sales consultancy
+39 0536 808519
info@panel.it



Technical assistance service
+39 0536 808519
support@panel.it

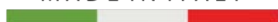


www.panel.it

FORWARD THINKING



MADE IN ITALY



PANEL S.R.L.
Via Madrid 18
41049 Sassuolo, MO

P.I. 03301520361
+39 0536 808519
info@panel.it

www.panel.it

The information given in this document contains only descriptions and performance features, which may not always correspond to what is described or may change due to product developments. Any requested information is binding only when expressly agreed in terms of contracts.

All specifications are subject to change without prior notice. Names and labels mentioned may be registered trademarks owned by Panel S.r.l. or supplier companies, whose use by third parties could violate the rights of the owner.